


Message from the President



Mitsubishi Jisho Property Management Co., Ltd. brings a great deal of expertise to the services it provides to its many customers in the management of office buildings and large-scale multipurpose complexes owned by Mitsubishi Estate Co., Ltd., as well as other facilities across Japan, including many owned outside the Mitsubishi Estate Group.

The broad portfolio of reliable services that we deliver at Mitsubishi Jisho Property Management consistently earns the trust of our customers. Our administration and management services provide the efficiency that owners expect while also ensuring safe, secure and comfortable environments. We also leverage our property management expertise, going beyond handling individual buildings, in fields such as area management and promotional services. We also offer services in fields such as tenant leasing, where we leverage the strengths of our robust network, and consulting services, where we provide the diverse solutions that customers need. Mitsubishi Jisho Property Management is committed to top quality across all of these diverse services, as it builds upon its track record of success.

In the face of today's constantly evolving social and technological environments, we strive to anticipate the kinds of value that our customers are looking for in office buildings and facilities. In this effort, all employees work as a tight-knit team, cooperating closely with customers and taking on the challenge of developing new services and businesses.

We will continue to focus all of our businesses on creating unique value that resonates with each customer, while fulfilling the Mitsubishi Estate Group's mission of contributing to society through urban development. We appreciate your continued support and cooperation in these endeavors.

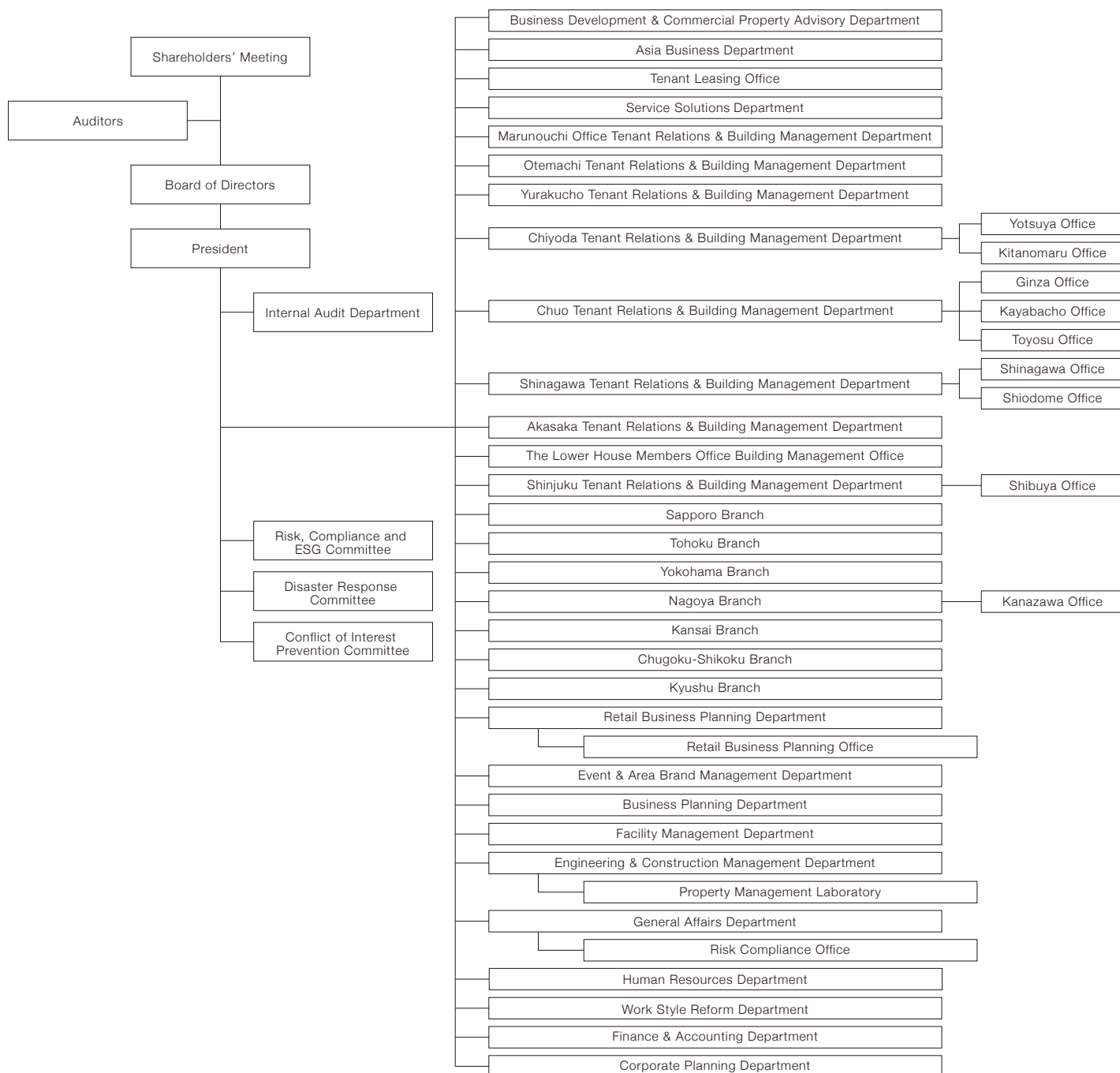


Ryozo Kawabata
President & Chief Executive Officer
Mitsubishi Jisho Property Management Co., Ltd.

Corporate Information

Company Name:	Mitsubishi Jisho Property Management Co., Ltd.
Paid-in Capital:	¥300 million (a wholly owned subsidiary of Mitsubishi Estate Co., Ltd.)
Date of Establishment:	October 1, 1991
Head Office:	Marunouchi-Nakadori Building, 2-3, Marunouchi 2-chome, Chiyoda-ku, Tokyo 100-0005, Japan Telephone +81-3-3287-4111
Business:	Comprehensive administration and management services for office buildings, commercial complexes, and so forth
Number of Employees:	1,224 (As of April 1, 2020)
Licenses:	Real Estate Business — License No. (4) 6334, issued by Minister of Land, Infrastructure, and Transport Construction Business — License No. (Specified-30) 20474, issued by Minister of Land, Infrastructure, and Transport (for architectural and construction work; carpentry; plastering; scaffolding and excavation; masonry; roofing; electrical work; plumbing work; tiling, brick and block work; glazing; painting; waterproofing; interior furnishing; and cabinet making) First Class Registered Architect Office — License No. 51345, issued by Tokyo Metropolitan Governor Security Services — License No. 45000808, issued by Tokyo Metropolitan Public Safety Commission

Organization



Affiliate Company